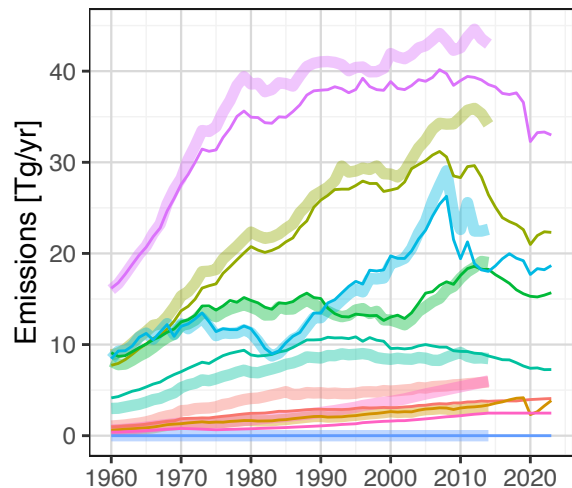


Global CEDS comparison – current to previous version

Global Sectors



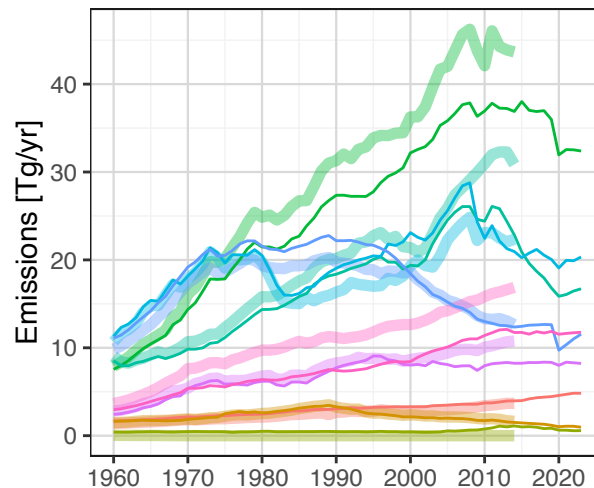
Sector

- Agriculture
- Air
- Energy Transf/Ext
- Industry
- RCO
- Shipping
- Solvents
- Transportation
- Waste

Version

- CMIP6
- v_2025_03_11

Global Fuel



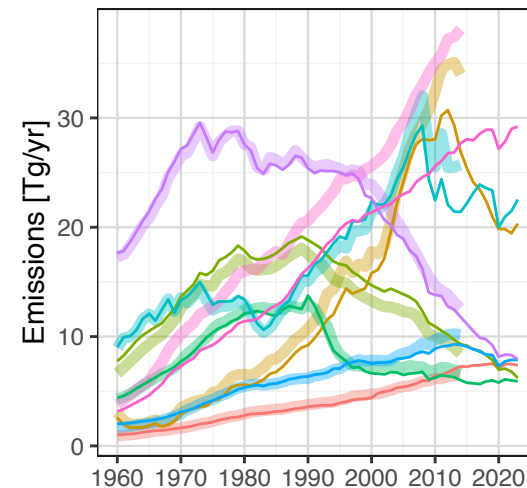
Fuel

- biomass
- brown_coal
- coal_coke
- diesel_oil
- hard_coal
- heavy_oil
- light_oil
- natural_gas
- process

Version

- CMIP6
- v_2025_03_11

Global Region



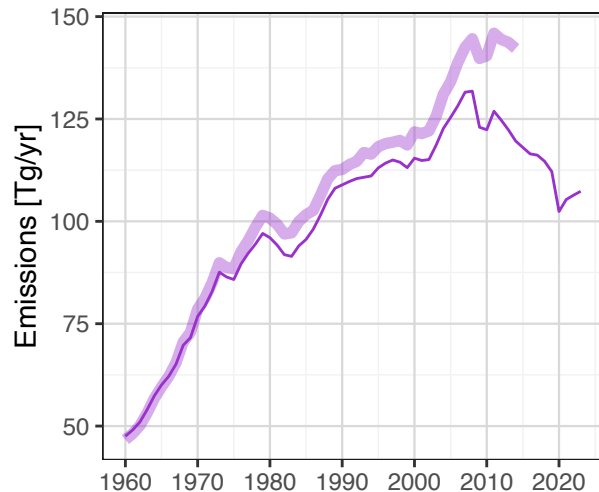
Region

- Africa
- China
- Europe
- Former Soviet Union
- International
- Latin America
- North America
- Other Asia/Pacific/ME

Version

- CMIP6
- v_2025_03_11

Global Total

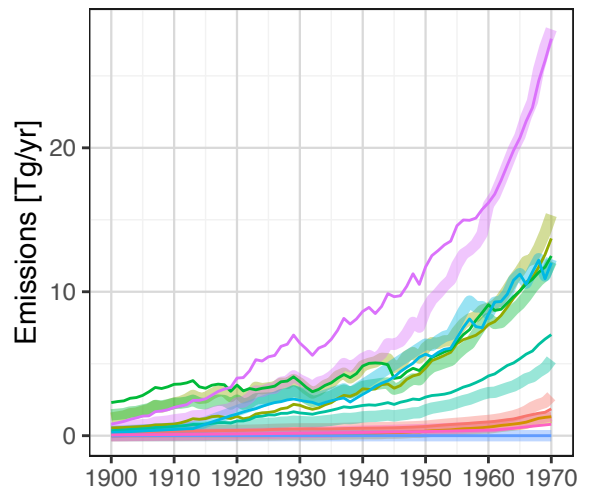


Version

- CMIP6
- v_2025_03_11

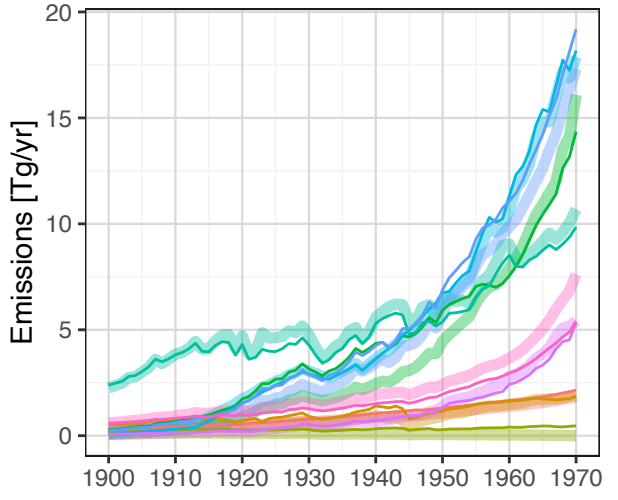
Global CEDS comparison – current to previous version

Global Sectors



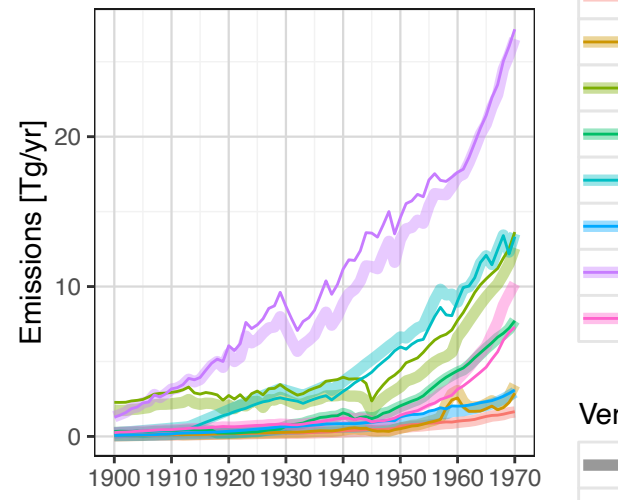
- Sector**
- Agriculture
 - Air
 - Energy Transf/Ext
 - Industry
 - RCO
 - Shipping
 - Solvents
 - Transportation
 - Waste
- Version**
- CMIP6
 - v_2025_03_11

Global Fuel



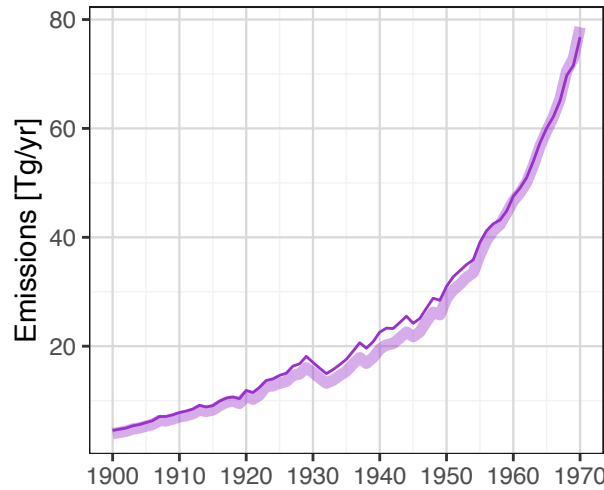
- Fuel**
- biomass
 - brown_coal
 - coal_coke
 - diesel_oil
 - hard_coal
 - heavy_oil
 - light_oil
 - natural_gas
 - process
- Version**
- CMIP6
 - v_2025_03_11

Global Region



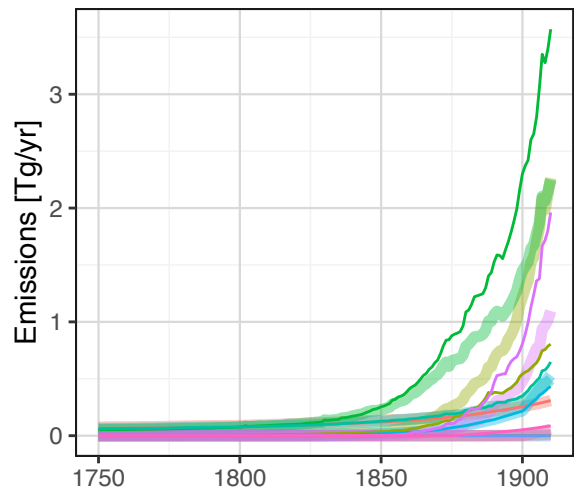
- Region**
- Africa
 - China
 - Europe
 - Former Soviet Union
 - International
 - Latin America
 - North America
 - Other Asia/Pacific/ME
- Version**
- CMIP6
 - v_2025_03_11

Global Total



- Version**
- CMIP6
 - v_2025_03_11

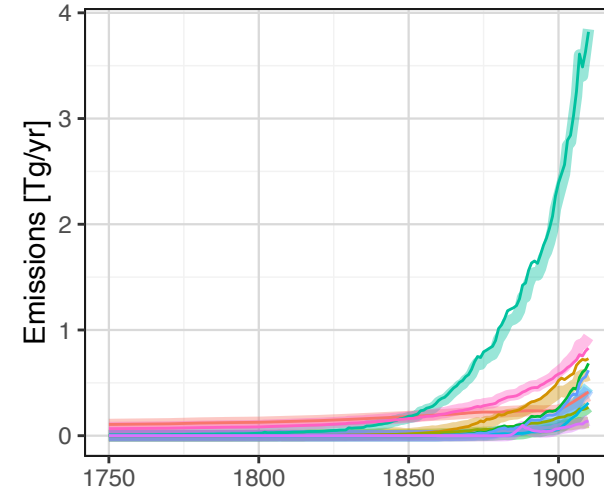
Global Sectors



- Sector**
- Agriculture
 - Air
 - Energy Transf/Ext
 - Industry
 - RCO
 - Shipping
 - Solvents
 - Transportation
 - Waste
- Version**
- CMIP6
 - v_2025_03_11

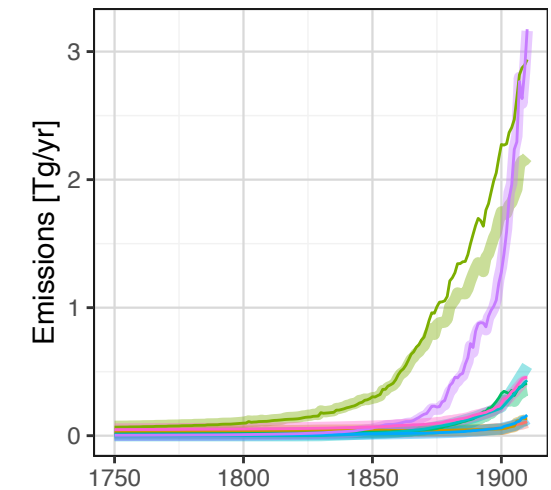
Global CEDS comparison – current to previous version

Global Fuel



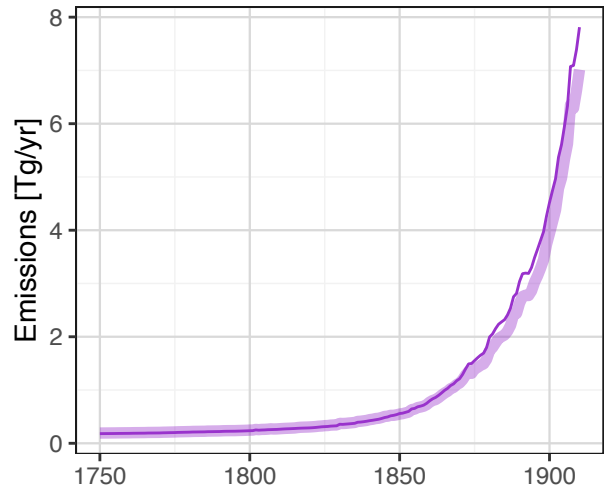
- Fuel**
- biomass
 - brown_coal
 - coal_coke
 - diesel_oil
 - hard_coal
 - heavy_oil
 - light_oil
 - natural_gas
 - process
- Version**
- CMIP6
 - v_2025_03_11

Global Region



- Region**
- Africa
 - China
 - Europe
 - Former Soviet Union
 - International
 - Latin America
 - North America
 - Other Asia/Pacific/ME
- Version**
- CMIP6
 - v_2025_03_11

Global Total



- Version**
- CMIP6
 - v_2025_03_11