

ODM Quality Report

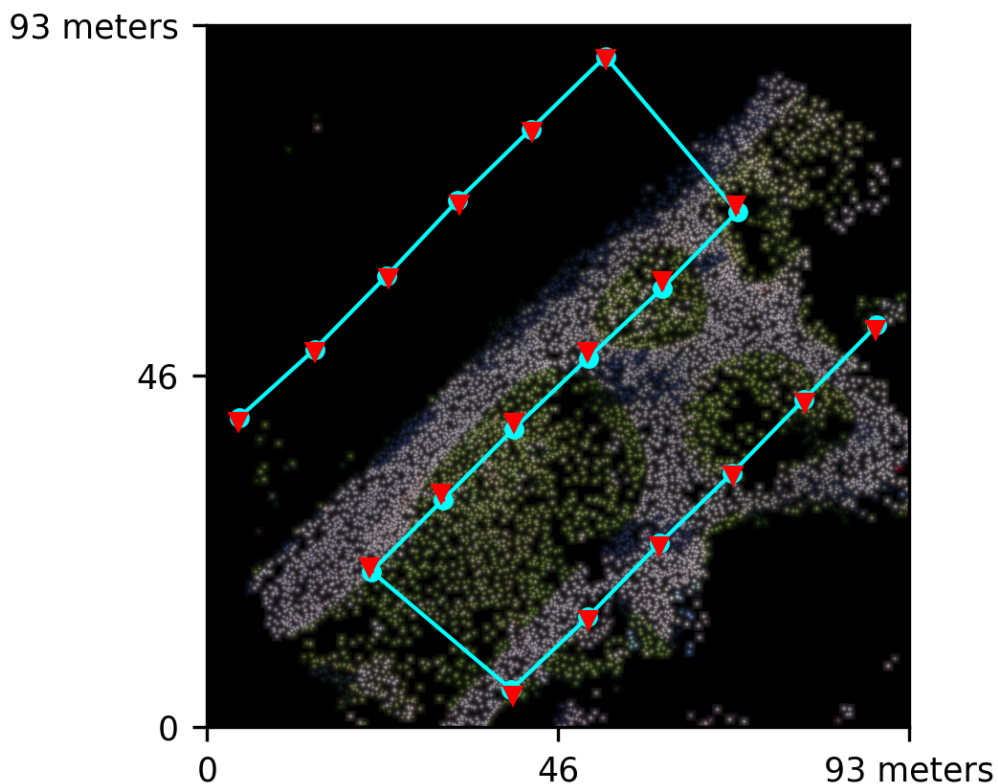
Processed with ODM version 3.6.0

Dataset Summary

Date	26/11/2025 at 19:07:46
Area Covered	0.007065 km ²
Processing Time	5.0m:45.0s
Capture Start	23/06/2016 at 16:31:59
Capture End	23/06/2016 at 16:34:03

Processing Summary

Reconstructed Images	18 over 18 shots (100.0%)
Reconstructed Points (Sparse)	11163 over 11367 points (98.2%)
Reconstructed Points (Dense)	1,503,084 points
Average Ground Sampling Distance (GSD)	1.6 cm
Detected Features	8,381 features
Reconstructed Features	2,072 features
Geographic Reference	GPS
GPS errors	0.63 meters

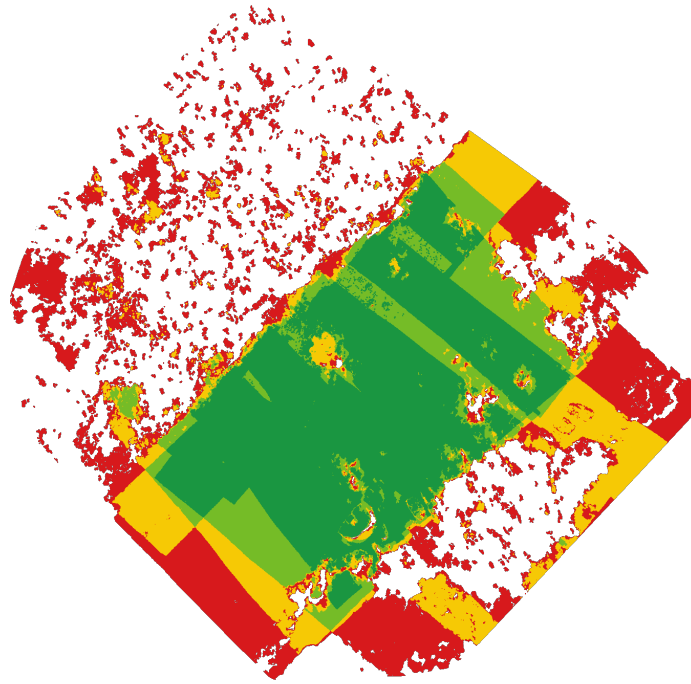


Previews



Orthophoto

Survey Data



■ 2
 ■ 3
 ■ 4
 ■ 5+

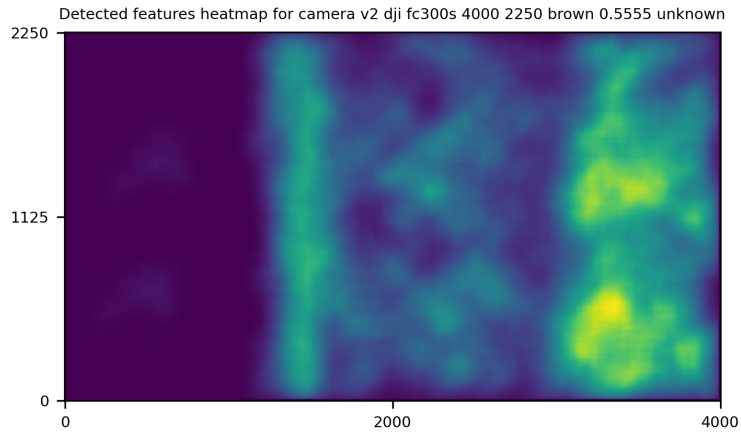
GPS/GCP/3D Errors Details

GPS	Mean	Standard Deviation	RMS Error
X Error (meters)	-0.018	0.163	0.164
Y Error (meters)	-0.006	0.594	0.594
Z Error (meters)	0.011	0.259	0.259
Total			0.628

3D	Mean	Standard Deviation	RMS Error
X Error (meters)	0.011	0.015	0.019
Y Error (meters)	0.011	0.015	0.018
Z Error (meters)	0.017	0.029	0.033
Total			0.025

	Absolute	Relative
Horizontal Accuracy CE90 (meters)	0.917	0.033
Vertical Accuracy LE90 (meters)	0.399	0.039

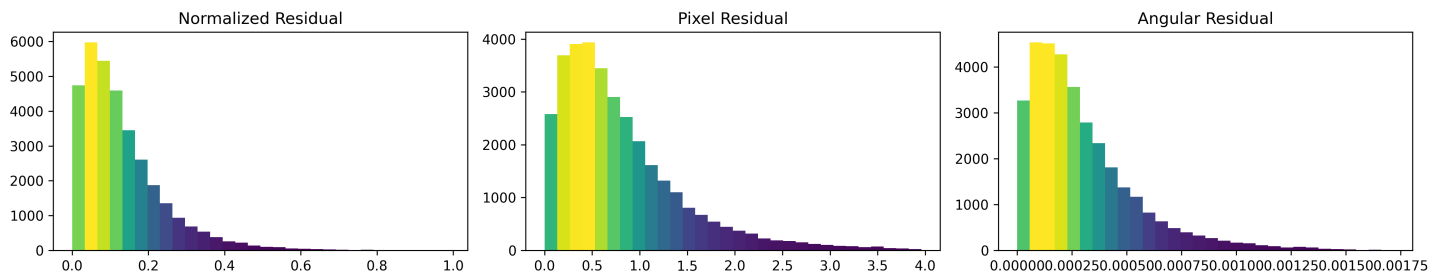
Features Details



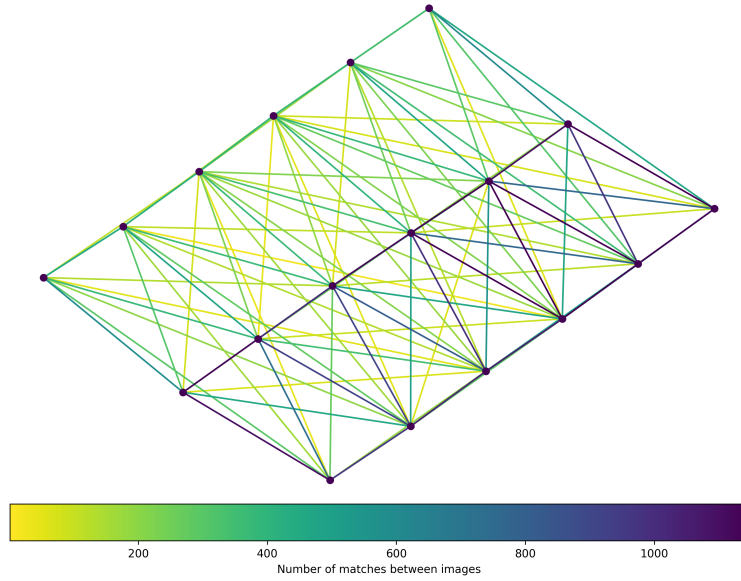
	Min.	Max.	Mean	Median
Detected	6539	9270	8323	8381
Reconstructed	798	3346	1892	2072

Reconstruction Details

Average Reprojection Error (normalized / pixels / angular)	0.13 / 0.80 / 0.00030
Average Track Length	3.05 images
Average Track Length (> 2)	4.08 images



Tracks Details

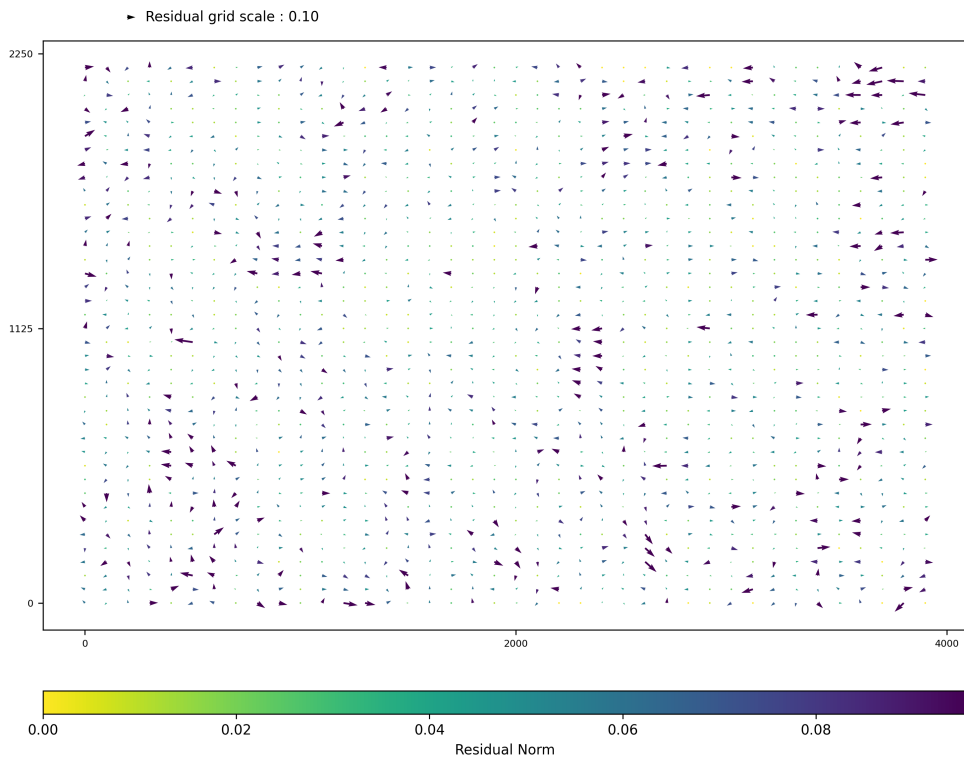


Length	2	3	4	5	6	7	8	9
Count	5526	2393	1523	1008	413	190	94	15

Camera Models Details

v2 dji fc300s 4000 2250 brown 0.5555 abcdefgh

	k1	k2	k3	p1	p2	focal	aspect_ratio	cx	cy
Initial	0.0000	0.0000	0.0000	0.0000	0.0000	0.5556	1.0000	0.0000	0.0000
Optimized	0.0049	0.0050	0.0073	-0.0002	0.0014	0.5557	1.0000	-0.0077	0.0055



v2 dji fc300s 4000 2250 brown 0.5555 unknown

	k1	k2	k3	p1	p2	focal	aspect_ratio	cx	cy
Initial	0.0000	0.0000	0.0000	0.0000	0.0000	0.5556	1.0000	0.0000	0.0000
Optimized	0.0066	0.0027	0.0059	-0.0008	0.0009	0.5587	1.0000	-0.0106	0.0066

